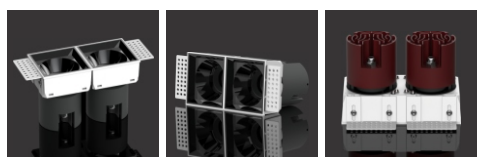
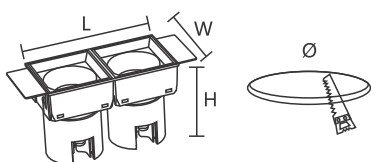


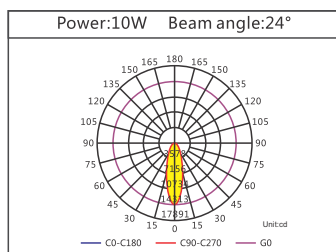
Model: GLW006

Parameter

Power : 10W*2
 Light source : COB
 Ring color : Spase black/linen silver
 Voltage : AC85-265V
 Beam angle : 24°/36°
 Material : Aluminium
 Color temperature : 3000K/4000K/6000K
 Ra : Ra>80
 Lm : 90 LM/W



Power	10W*2
Size	L148*W74*H99mm
Cutout	L150*W80mm



H(m)	EO(x)	Dh/DV_B(m)	S_B(sq.m)	Ea_r_B(x)
1.0m	14313.85	0.32/0.32	0.1	6485.93
2.0m	3578.96	0.64/0.63	0.3	1621.73
3.0m	1590.87	0.96/0.95	0.7	720.44
4.0m	894.49	1.27/1.27	1.3	405.68
5.0m	572.15	1.59/1.58	2.0	259.64

(B): H18.1V18.0 (F): H35.1 35.4

